

# Capnography - Microstream<sup>®</sup> EtCO<sub>2</sub>



1



2



3



4



5



6



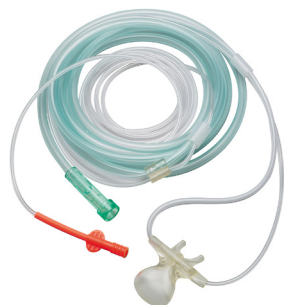
7



8



9



10



11



12

# Capnography – Microstream® EtCO<sub>2</sub>

## Microstream® EtCO<sub>2</sub> Solution Single Patient Use

Product #	Description	Packaging	Use with:*
1 M1920A	FilterLine Set, Adult/Pedi, Intubated	25 sets	Microstream® Ext: M3015A, M3015B, MP5: M8105A, M8105AS, VM8: 863066, VM1: 863266 Efficia CM10 (863301), CM12 (863303), CM100 (863300), CM120 (863302), CM150 (863304)
2 M1921A	FilterLine H Set, Adult/Pedi, Intubated		
3 M1923A	FilterLine H Set, Infant/Neonatal, Intubated		
4 989803160241	FilterLine® Set Long, Adult/Pediatric		
5 989803160251	FilterLine H Set Long, Adult/Pediatric		
6 989803160261	FilterLine H Set Long, Infant/Neonatal		
7 989803159571	VitaLine™ H Set, Adult/Pediatric		
8 989803159581	VitaLine™ H Set, Infant/Neonatal		
9 M2520A	Smart CapnoLine® O <sub>2</sub> Pediatric	25 FilterLines®	
10 M2522A	Smart CapnoLine® O <sub>2</sub> Adult/Intermediate		
11 M2524A	Smart CapnoLine® Pediatric		
12 M2526A	Smart CapnoLine® Adult/Intermediate		

\* Please reference the [MySupplies](#) or the [e-store](#) website for more details on hardware compatibility.

# Capnography – Microstream<sup>®</sup> EtCO<sub>2</sub>



13



14



15



16



17



18



19

# Capnography – Microstream® EtCO<sub>2</sub>

## Microstream® EtCO<sub>2</sub> Solution Single Patient Use (continued)

Product #	Description	Reusable/ Single Patient Use	Packaging	Use with:*
13 989803160271	Smart CapnoLine® O <sub>2</sub> Pediatric Long	Single Patient Use	25 FilterLines®	Microstream® Ext: M3015A, M3015B, MP5: M8105A, M8105AS VM8: 863066, VM1: 863266, Efficia CM10 (863301), CM12 (863303), CM100 (863300), CM120 (863302), CM150 (863304)
989803160281	Smart CapnoLine® O <sub>2</sub> Plus Adult Long			
989803160301	Smart CapnoLine® Plus Adult Long			
14 M4680A	CapnoLine® H O <sub>2</sub> Adult			
15 M4681A	CapnoLine® H O <sub>2</sub> Pediatric			
16 M4686A	NIV Adult			
17 M4687A	NIV Pediatric			
18 M4689A	CapnoLine® H Adult			
19 M4691A	CapnoLine® H Infant/Neonatal			
989803177951	Smart CapnoLine® H O <sub>2</sub> Adult			
989803177961	Smart CapnoLine® H O <sub>2</sub> Adult Long			
989803177971	Smart CapnoLine® H O <sub>2</sub> Pediatric			
989803177981	Smart CapnoLine® H O <sub>2</sub> Pediatric Long			
989803178001	CapnoLine® H O <sub>2</sub> Infant/Neonatal			
989803178011	CapnoLine® H Infant/Neonatal Long			
989803178021	Nasal FilterLine® Infant/Neonatal			
989803178031	Smart CapnoLine® Guard			
989803178041	Smart CapnoLine® Guard O <sub>2</sub>			
989803178051	Smart CapnoLine® Guard O <sub>2</sub> Long			
989803178071	Hook and Loop Strap		1 box = 25	
989803179101	Nasal FilterLine® O <sub>2</sub> Adult	25 FilterLines®		
989803179111	Nasal FilterLine® O <sub>2</sub> Adult Long			
989803179121	Nasal FilterLine® O <sub>2</sub> Pediatric			
M2267A	Calibration Regulator	Reusable	1 regulator	

\* Please reference the [MySupplies](#) or the [e-store](#) website for more details on hardware compatibility.

# Capnography - LoFlo Sidestream EtCO<sub>2</sub>



# Capnography - LoFlo Sidestream EtCO<sub>2</sub>

## Philips LoFlo Sidestream EtCO<sub>2</sub> Solution Single Patient Use

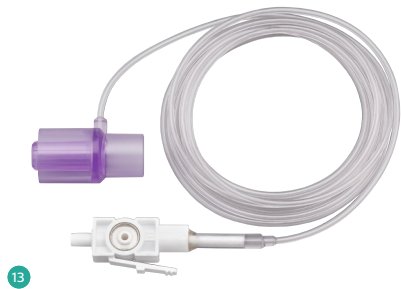
Product #	Description	Reusable / Single Patient Use	Packaging	Use with:*
1 M2741A	LoFlo Sidestream EtCO <sub>2</sub> Sensor	Reusable	1 sensor	Sidestream Ext. Server: M3014A, MP5: M8105A, MP2: M8102A, Multi-Measurement Module X2: M3002A
2 M2744A	EtCO <sub>2</sub> Nasal Cannula - Adult	Single Patient Use	10 cannula	Sidestream Sensor: M2741A with Sidestream Ext. Server: M3014A, MP5: M8105A, MP2: M8102A, Multi-Measurement Module X2: M3002A
3 M2745A	EtCO <sub>2</sub> Nasal Cannula - Pediatric			
4 M2746A	EtCO <sub>2</sub> Nasal Cannula - Infant			
5 M2750A	EtCO <sub>2</sub> / O <sub>2</sub> Nasal Cannula - Adult			
6 M2751A	EtCO <sub>2</sub> / O <sub>2</sub> Nasal Cannula - Pediatric			
7 989803144471	EtCO <sub>2</sub> / O <sub>2</sub> Nasal Cannula - Infant/ Neonate			
8 M2756A	EtCO <sub>2</sub> Oral-Nasal Cannula - Adult			
9 M2757A	EtCO <sub>2</sub> Oral-Nasal Cannula - Pediatric			
10 M2760A	EtCO <sub>2</sub> / O <sub>2</sub> Oral-Nasal Cannula - Adult			
11 M2761A	EtCO <sub>2</sub> / O <sub>2</sub> Oral-Nasal Cannula - Pediatric			
12 M2768A	Airway Adapter Set - ET > 4.0 mm		10 sets	Sidestream Sensor: M2741A with Sidestream Ext. Server: M3014A, MP5: M8105A, MP2: M8102A, Multi-Measurement Module X2: M3002A

\* Please reference the [MySupplies](#) or the [e-store](#) website for more details on hardware compatibility.

# Capnography - LoFlo Sidestream EtCO<sub>2</sub>

## Philips LoFlo Sidestream EtCO<sub>2</sub> Solution Single Patient Use (continued)

Product #	Description	Reusable / Single Patient Use	Packaging	Use with:*
13 989803144531	Airway Adapter Set - ET <=4.0 mm	Single Patient Use	10 sets	Sidestream Sensor: M2741A with Sidestream Ext. Server: M3014A, MP5: M8105A, MP2: M8102A, Multi-Measurement Module X2: M3002A, 860335, 860338
14 M2772A	Airway Adapter Set H - ET > 4.0 mm			
15 M2773A	Airway Adapter Set H - ET <=4.0 mm			
16 M2776A	Straight Sample Line, non-humidified		10 lines	Sidestream Sensor: M2741A with Sidestream Ext. Server: M3014A, MP5: M8105A, MP2: M8102A, Multi-Measurement Module X2: M3002A
17 M2777A	Straight Sample Line H, humidified			



# Capnography - LoFlo Sidestream EtCO<sub>2</sub>

## LoFlo Sidestream EtCO<sub>2</sub> Supplies

Product #	Description	Packaging	Use with:*
1 M1612A	Straight airway adapter. Single patient use	20 adapters	Legacy HP/Agilent: M1015A
2 13901A	Reusable Nafion sample tube	1 tube	Legacy HP/Agilent: M1015A, M1016A
3 13902A	Elbow airway adapter. Single patient use	20 adapters	
13904A	Bacteria filter (0.45 micron). Single patient use	20 filters	Legacy HP/Agilent: M1015A
13905A	Hybrid Nafion polyethylene sample tube. Single patient use Nafion length: 6 ft (1.8m) Polyethylene length: 9 ft (2.7m)	1 tube	



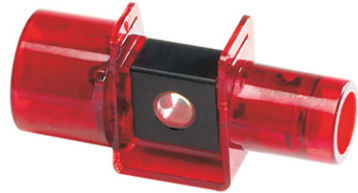
\* Please reference the [MySupplies](#) or the [e-store](#) website for more details on hardware compatibility.



# Capnography - Mainstream Capnostat 5 EtCO<sub>2</sub>



1



2



3

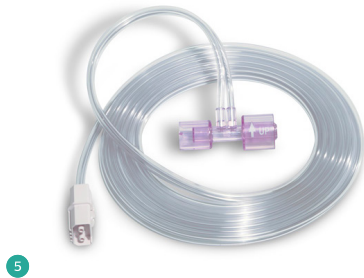
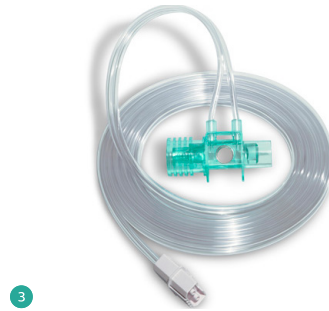
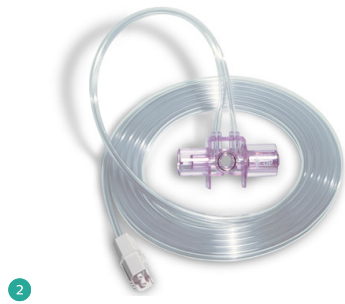
# Capnography – Mainstream Capnostat 5 EtCO<sub>2</sub>

## Philips Mainstream Capnostat 5 EtCO<sub>2</sub> Solution

Product #	Description	Packaging	Use with:*
1 M2501A	Mainstream Capnostat 5 EtCO <sub>2</sub> Sensor	1 sensor	Efficia CM10 (863301), CM12 (863303), CM100 (863300), CM120 (863302), CM150 (863304) M2513A, M2516A, M2533A, M2536A: M2501A Sensor with M3014A Capnography Extension, Monitors: MP5: M8105A, MP2: M8102A, Multi-Measurement Module X2: M3002A
M2513A	Airway Adapter Adult/Pediatric Reusable Use with ET tube > 4mm	1 adapter	
2 M2516A	Airway Adapter Infant Reusable Use with ET tube < 4mm Deadspace < 1cc		
M2533A	Airway Adapter Adult/Pediatric Disposable Use with ET tube > 4mm	10 adapters	
3 M2536A	Airway Adapter Infant single patient use Use with ET tube < 4mm Deadspace < 1cc		
M2505A	Gas Cylinder Regulator	1 gas regulator	
M2506A	Gas Verification Gas	1 gas cylinder	Mainstream Capnostat 5 EtCO <sub>2</sub> Sensor: M2501A, MP2: M8102A, Multi-Measurement Module X2: M3002A

\* Please reference the [MySupplies](#) or the [e-store](#) website for more details on hardware compatibility.

# Spirometry EtCO<sub>2</sub> / Flow



# Spirometry EtCO<sub>2</sub> / Flow

## IntelliVue Spirometry EtCO<sub>2</sub> Sensors Single Patient Use

Product #	Description	Packaging	Use with:*
1 M2781A	Combined EtCO <sub>2</sub> / Flow Sensor. Adult / Pediatric ET: greater than 5.5mm	10 sensors	Spirometry Module: M1014A with M2501A Mainstream EtCO <sub>2</sub> Sensor and M3014A Capnography Ext.
2 M2782A	Combined EtCO <sub>2</sub> / Flow Sensor Neonatal. Infant ET: 2.5mm to 4mm		
3 M2783A	EtCO <sub>2</sub> / Flow Sensor Pediatric ET: 3.5mm to 6mm		
4 M2785A	Flow Sensor Adult/Pediatric ET: greater than 4mm		M1014A Spirometry Module
5 M2786A	Flow Sensor Infant/Neonatal ET: less than 4mm		

\* Please reference the [MySupplies](#) or the [e-store](#) website for more details on hardware compatibility.